

Group + Picnic Areas

Three beautiful group picnic areas located in the North Tahoe Regional Park that can accommodate a wide variety of groups, celebrations, and individual family picnics and special events.



Ramada Group Area

- Covered picnic area that seats up to 100 people can accommodate up to 200 people.



Playground Picnic Area

- 5 picnic tables
- ADA accessible
- Perfect for small groups, birthday parties, or special events



Picnic Area West

- 5 picnic tables under the pines
- Close to the playground
- Private forested location

Regional Park Parking Fee



- \$5 Monday through Friday
- \$20 Holidays and Weekends (October–April only)
- Upon arrival to the Park, please pay kiosk attendant or use self-pay stations.
- Parking Fee Waived with NTPUD Parking Pass or Tahoe TreeTop Park reservation.



Recreation and Parks Facilities
operated by the North Tahoe Public
Utility District

North Tahoe Regional Park

6600 Donner Road, Tahoe Vista, CA



Tahoe Vista Recreation Area

7010 North Lake Blvd., Tahoe Vista, CA

North Tahoe Event Center

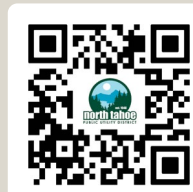
8318 North Lake Blvd., Kings Beach, CA

Connect With Us!

- Follow [@NorthTahoeRecreation](#) |  
- Explore our website — ntpud.org
- Call (530) 546-4212 with questions

Located in Tahoe Vista, California — one mile west of highway 267 and one mile north of highway 28. The North Tahoe Regional Park spans approximately 124 acres and offers captivating lake views and a variety of year-round recreation activities for visitors of all ages.

Scan me for mobile friendly
version of the
REGIONAL PARK MAP



**NORTH TAHOE
REGIONAL PARK**

MAP + VISITOR GUIDE



Call (530) 546-4212 or email parks@ntpud.org
for facility and field rental information.

6600 Donner Road, Tahoe Vista, California
ntpud.org | parks@ntpud.org | (530) 546-4212

6600 Donner Road, Tahoe Vista, California
ntpud.org | parks@ntpud.org | (530) 546-4212

Disc Golf Course



- 18-hole disc golf course
- Open seasonally
- Course map available on the UDisc app

Hiking + Biking Trails



- 6 miles (10km) of trails for hiking, walking, running, biking, and adventures.

Cross-Country Skiing



- 6 miles (10km) of groomed winter trails for cross-country skiing, snowshoeing, and walking.

Sledding



- The park offers three areas that are groomed and maintained for sledding.
- Bring your own equipment for sledding.

◆ **SUNNY SLOPE:** Located above Field #4, Sunny Slope is our steepest, fastest and longest sledding area.

■ **TOWER HILL:** Located above the upper parking lot, Tower Hill is a smooth long gradual downhill.

● **THE MELLOW MEADOW:** Located at the main park gate, Mellow Meadow is great for toddlers or first time sledders.

Tennis + Pickleball Facility



- 3 tennis courts
- 6 pickleball courts
- Reservations available
- Open seasonally

Tahoe Unleashed Dog Park



- Safely exercise, train, and socialize your furry companion
- 2 separate fenced areas for small and large dogs
- 1-acre play area for dogs of all sizes, "The Outback"
- Offering dog agility obstacles
- Please clean up after your dog
- Open seasonally

Athletic Fields



- 3 baseball/softball fields
- 1 multi-purpose field
- 1 year-round synthetic turf soccer and lacrosse field
- Available for reservation/rental

Playground



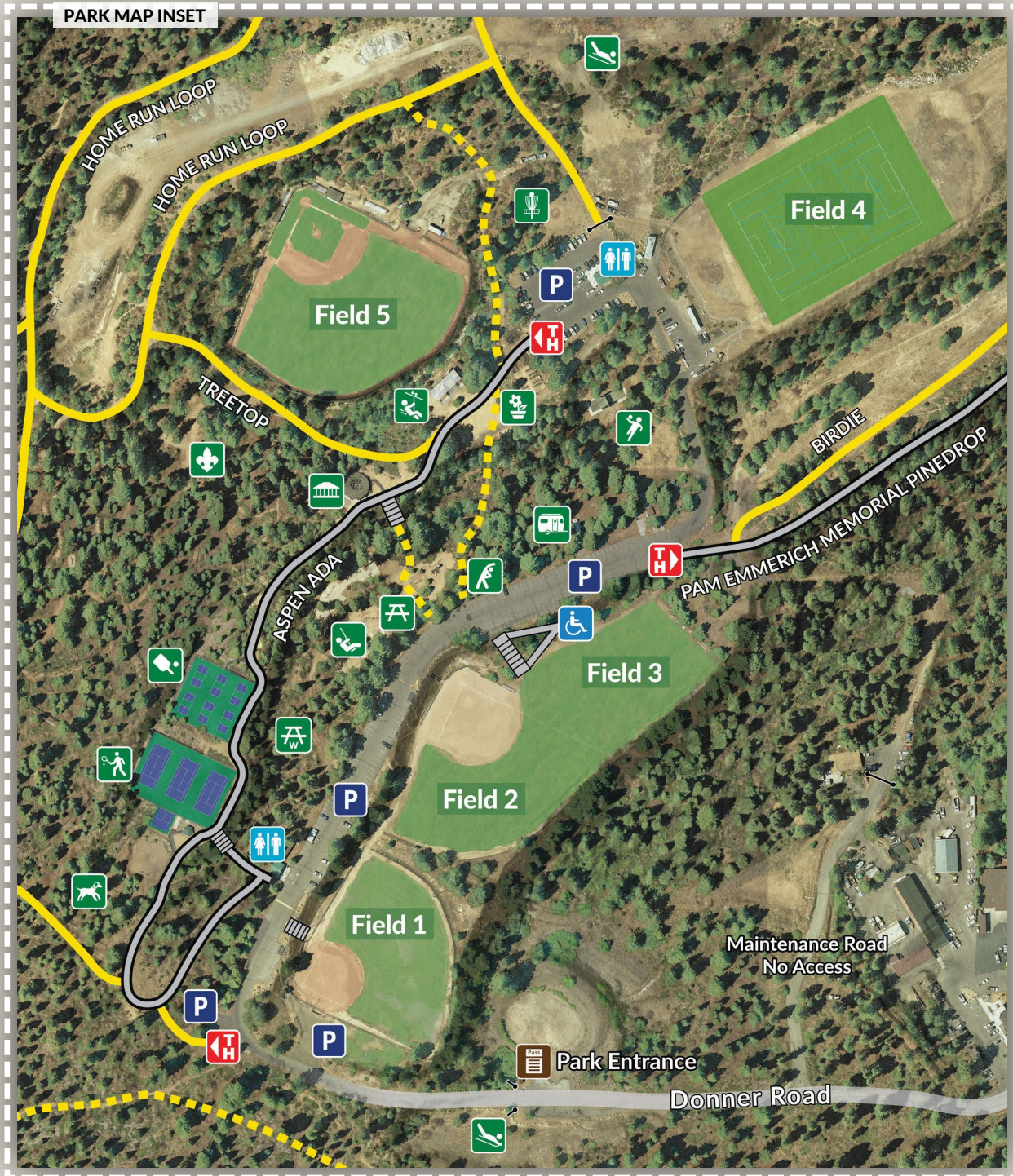
- Playground for all ages
- Climbing bars, slides, spring rider play equipment
- Separate adult fitness area
- ADA accessible

Tree Top Adventure Park

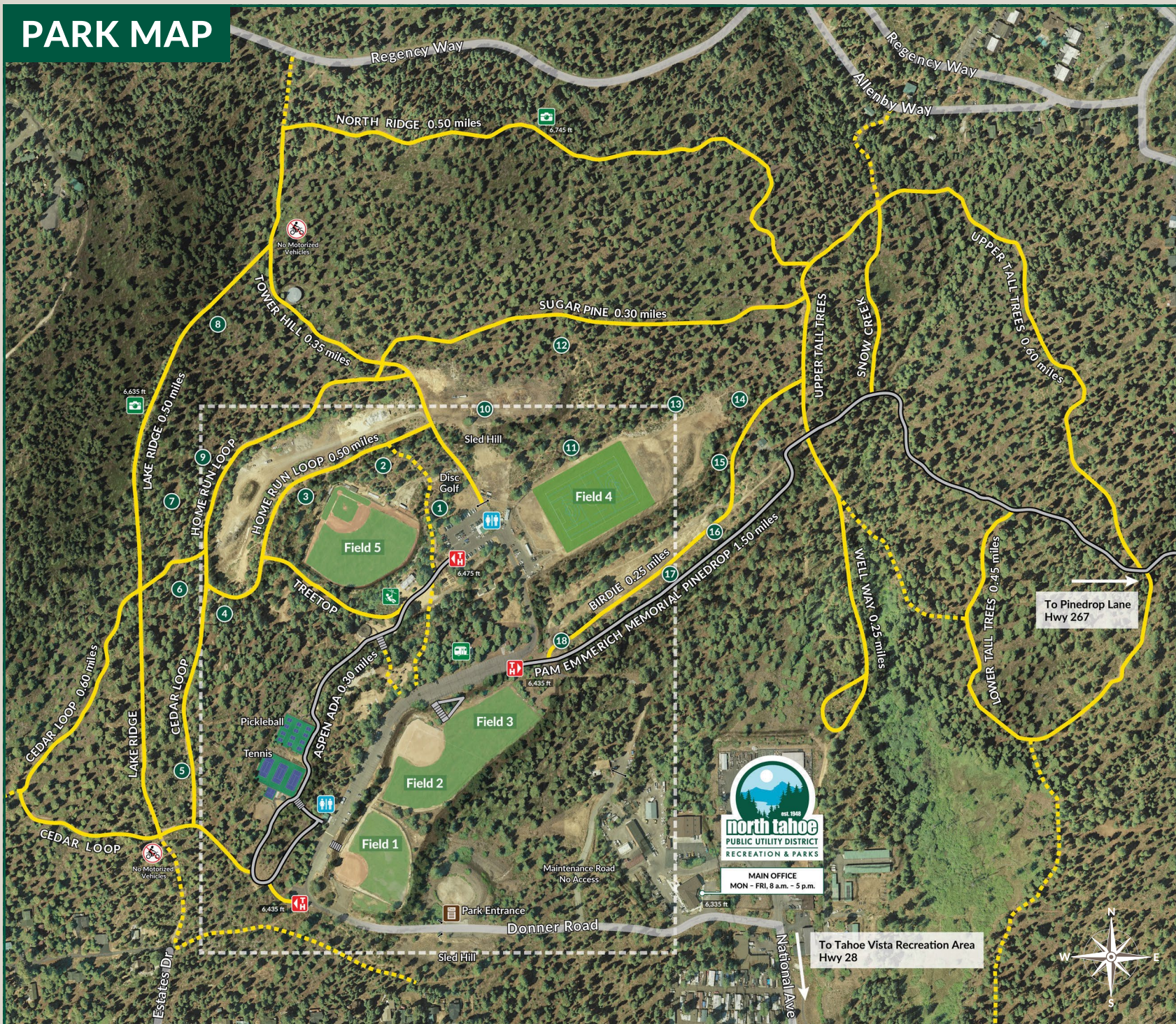


Navigate between +/- 40 foot high platforms using bridges, zip lines, and more! (You're always clipped in to a safety line!) No experience or special equipment necessary. Reservations required in the summer. Call (530) 807-1004 or visit TahoeTreetop.com

NORTH TAHOE REGIONAL PARK



PARK MAP LEGEND		
Multi-Use Trail (Winter grooming)	Community Garden	Park Host
Trail	Disc Golf (Practice Area/Hole 1)	Playground Picnic Area
Paved Trail	Dog Park	Playground
Trailhead	Handball Court	Pickleball Courts
Gate	Par Course Start	Picnic Area West
Disc Golf Tee Box	Ramada	Scout Camp
	Sled Hill	Tennis Courts
		TAHOE TREETOP Adventure Parks



ALWAYS

- Park open dawn to dusk.
- Pay parking fee at marked locations within park.
- Clean up after yourself! Pack your trash out.
- Pick up after your pet.
- Keep dogs off all fields.
- No motorized vehicles allowed on trails.

WINTER

- Walkers & snowshoes please keep to side of trails.
- Be prepared for variable weather conditions.
- Stay safe! Sled at your own risk and note varying conditions around park and on sled hills.

SUMMER

- Be bear aware.
- Burn ban at park. No open flames or charcoal grills.
- Keep right, pass left on trails.

www.ntpud.org | 530-546-4212

