



PROPOSED FIVE-YEAR RATE INCREASE CUSTOMER NOTIFICATION

The District

The North Tahoe Public Utility District (District) was formed in 1948 to provide sewer services to Lake Tahoe north shore residents. In 1967, water services were added to the District's responsibility. The District currently serves approximately 5,500 sewer connections and 3,900 metered water connections.

Sewer System

The District's sewer system consists of over 73-miles of collection main pipeline and 7.5-miles of force main pipeline from Secline Avenue to Dollar Hill, with four primary and 16 secondary pump stations.

Water System

The District's water system contains over 53-miles of water distribution pipelines, five pump stations, eight water storage reservoirs, the National Avenue Water Treatment Plant, two groundwater wells, and one inter-tie with the Tahoe City Public Utility District.

Growing to Meet Our Community's Needs

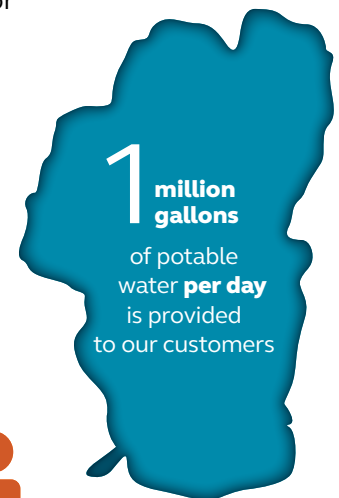
Much of the District's system was originally built to serve summer seasonal cabins. Over the years, we have invested in system expansion and improvements to grow with our community, meet increasing regulatory requirements, and ensure public health, safety, and the protection of our unique Lake Tahoe environment. Additionally, we have invested in expanding our water system to ensure adequate storage and capacity to provide reliable flows for modern fire protection.

Planning for the Future

The average age of infrastructure is approaching 50-years old, and despite continuous maintenance and system investment, much of the infrastructure is approaching the end of its service life. There is also significant investment necessary to expand fire flow coverage within our service area.



1 million gallons of wastewater **per day** is collected and pumped to the Tahoe-Truckee Sanitation Agency (T-TSA) for treatment



The District serves approximately **5,500 sewer** connections and **3,900 metered water** connections



Recognizing the approaching end of service life, we launched a comprehensive condition assessment effort in 2015. This included video inspection of all 73-miles of sewer collection main pipelines and leak detection across 53-miles of water distribution pipelines, as well as physical inspection and assessment of our sewer and water pump stations, water storage reservoirs, groundwater wells, and water treatment plant. In 2017, a comprehensive Capital Improvement Plan (CIP) was developed that identifies over \$51-million in necessary system rehabilitation and replacement over the next 20-years with \$18.5-million identified in the next five years. **This is nearly triple the District's historical annual infrastructure investment level.**

Investing in Our Infrastructure

To ensure the sewer and water systems continue to function properly and reliably now and into the future, our five-year CIP identifies many upgrade and replacement projects for:

- Sewer collection main pipelines, force main pipelines, and pump stations
- Water distribution pipelines and storage reservoirs
- Heavy equipment and vehicles

District Rate Assessment

In 2018, we retained an independent rate consultant and began a comprehensive cost-of-service study to determine whether existing rates and property tax revenues were sufficient to meet the system rehabilitation and replacement needs, as well as the District's operational costs for the water and sewer systems. Our rate structure was also assessed for compliance with industry best practices and California state law. California Proposition 218 (Cal. Const. Article XIII D, sec. 6) requires each customer class be charged only what is required to cover their respective proportional cost of service. Importantly, sewer rates can only be used to fund sewer system costs, and water rates only to fund the water system costs.

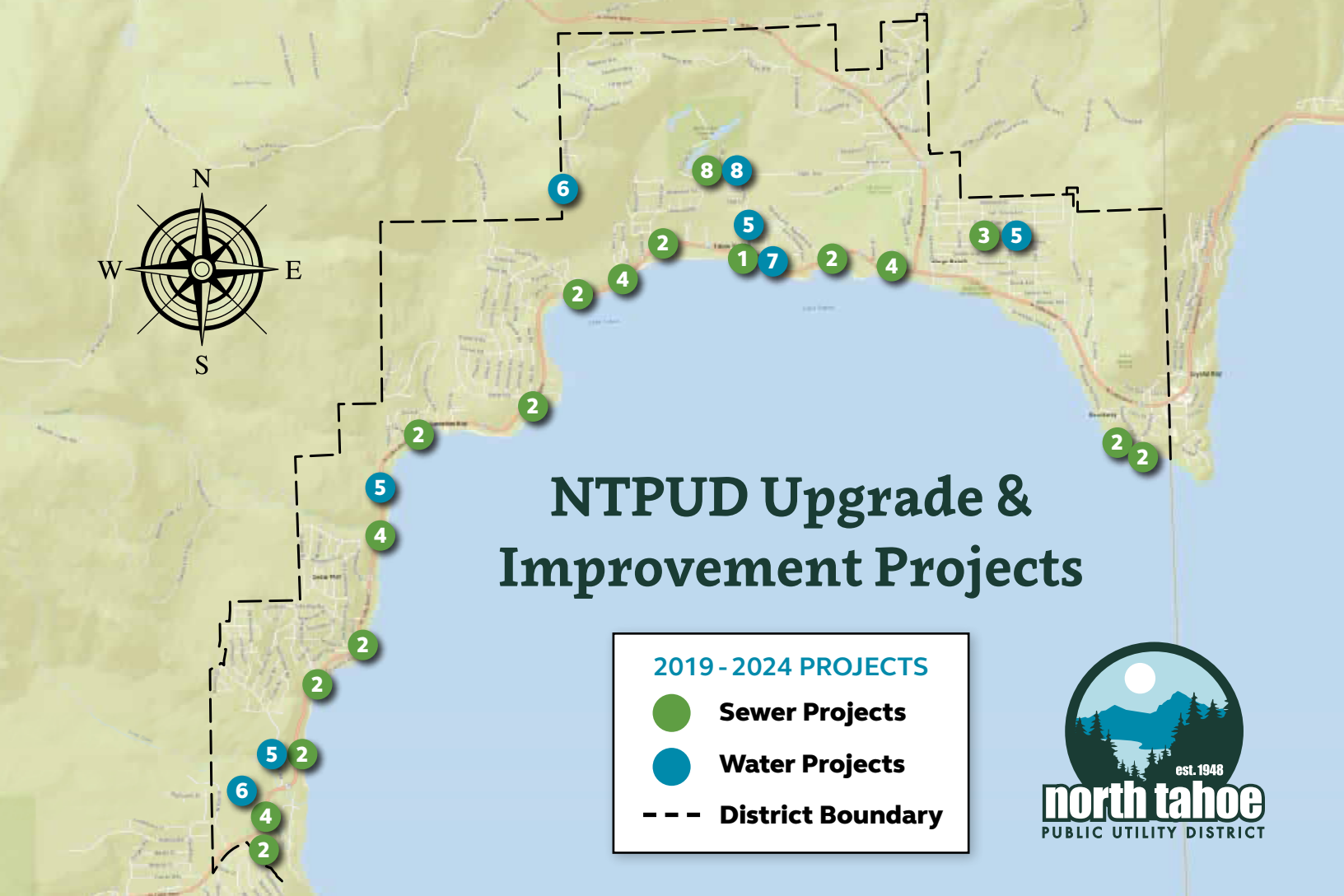
With the study now complete, we have determined annual rate increases are necessary over the next five years in order to continue providing reliable and sustainable sewer and water services into the future. **Existing rates and property tax revenues are not sufficient to fund necessary investments in our infrastructure and meet operational costs.**

The proposed increases to monthly sewer and water rates are triggered by many factors including:

- Identified infrastructure improvements necessary to address end of service life system rehabilitation and replacement
- Significant escalation of the cost of construction
- Inflationary increases in supply, material, labor, and utility costs

Additionally, we identified necessary rate restructuring to ensure continued compliance with Proposition 218. As a result of this rate restructuring, the bill impact of the proposed rate increases will not be the same across all customer classes, and some water customer classes will see a decrease from their current water bill.

The last major rate increase was approved by the District's Board of Directors on October 16, 2007, and the District has worked hard over the last decade to maintain stable and affordable rates. However, we must move forward with necessary infrastructure rehabilitation and replacement before our sewer and water system begins to see significant failures. **Even with the proposed adjustments, over the next five-year rate period, the District's rates will remain among the lowest of sewer and water service providers in the region.**



NTPUD Upgrade & Improvement Projects

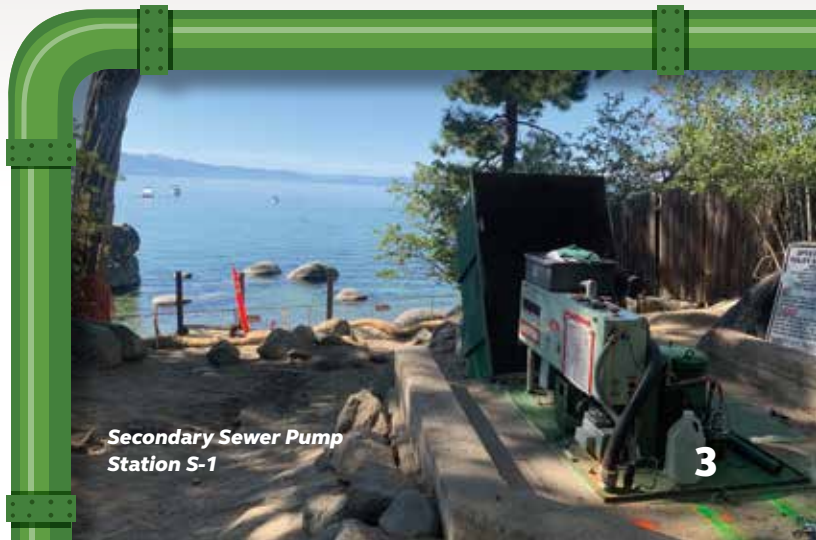
2019 - 2024 PROJECTS

- Sewer Projects
- Water Projects
- - - District Boundary



- 1 National Avenue Primary Sewer Pump Station Upgrades**
Final project of four rehabilitation and upgrade projects to the primary stations (equipment and pumps date to their original installation in 1968)
- 2 Secondary Sewer Pump Station Upgrades**
Rehabilitate or replace 11 of the secondary stations that date to 1969
- 3 Sewer Collection Main Rehabilitation**
Rehabilitate 4.5-miles of sewer collection main pipelines
- 4 Sewer Force Main Condition Assessment**
Installed in 1968 and approaching end of service life; a comprehensive condition assessment of the force main pipeline to develop rehabilitation and service life extension recommendations
- 5 Water Distribution Pipeline Replacement and Fire Protection Upgrades**
Four miles of water distribution pipelines identified for replacement and upgrade; will replace undersized and failing water pipelines with larger diameter modern pipelines to increase available fire protection flows; install new fire hydrants consistent with coverage requirements

- 6 Water Storage Reservoir Rehabilitation**
Rehabilitate and recoat two reservoirs to avoid structural failures and ensure reliable and continuous operations into the future
- 7 National Avenue Water Treatment Plant Upgrades**
Complete necessary end-of-life equipment replacements and control system upgrades at the water treatment plant
- 8 District Fleet and Corporation Yard Improvements**
Replace several pieces of heavy equipment, portable emergency pumps and generators, and vehicles that are at end of life; emergency power and seismic upgrades to corporation yard buildings



Secondary Sewer Pump Station S-1

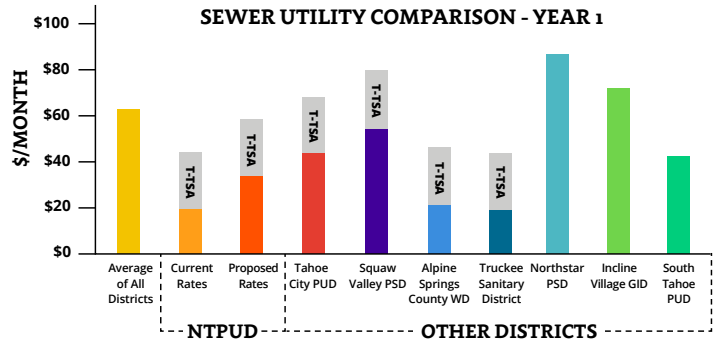
Current & Proposed Sewer Rates

Please contact the District or visit www.ntpud.org with questions or if you would like larger versions of the rate tables.

PROPOSED MONTHLY RATES*

CURRENT RATES	PROPOSED MONTHLY RATES*					
	FY 2019-20	FY 2020-21	FY 2021-22	FY 2022-23	FY 2023-24	
Proposed Effective Dates	1/1/20	7/1/20	7/1/21	7/1/22	7/1/23	
Residential						
Base Rate	\$9.50	\$25.08	\$25.08	\$27.71	\$31.13	\$34.67
System Replacement Rate	8.15	6.64	14.83	15.15	15.48	15.81
State/Federal Mandate Fee	1.49	1.24	1.27	1.31	1.34	1.37
Total Residential:	\$19.14	\$32.96	\$41.19	\$44.17	\$47.95	\$51.86
Non-Residential						
Base Rate	See table below					
System Replacement Rate	See table below					
State/Federal Mandate Fee	1.49	1.24	1.27	1.31	1.34	1.37
Total Non-Residential:						

*per equivalent dwelling unit



Single Family Residential Customers Effective 1/1/20
 T-TSA: Customer charges, under separate bill from Tahoe-Truckee Sanitation Agency, for wastewater treatment

PROPOSED MONTHLY NON-RESIDENTIAL BASE RATES

UNIT	CURRENT RATES	PROPOSED MONTHLY NON-RESIDENTIAL BASE RATES					
		FY 2019-20	FY 2020-21	FY 2021-22	FY 2022-23	FY 2023-24	
Proposed Effective Dates		1/1/20	7/1/20	7/1/21	7/1/22	7/1/23	
Motel w/o Kitchen	Per Living Unit/Month	\$3.07	\$8.11	\$8.11	\$8.95	\$10.06	\$11.20
Motel w/ Kitchen	Per Living Unit/Month	4.00	10.56	10.56	11.67	13.11	14.60
Campsite w/ Sewer	# of Sites/Month	6.13	16.19	16.19	17.88	20.09	22.37
Campsite w/o Sewer	# of Sites/Month	5.36	14.15	14.15	15.63	17.57	19.56
Other Business	# of Fixture Units/Month	1.22	3.22	3.22	3.56	4.00	4.45
Markets	# of Fixture Units/Month	2.15	5.68	5.68	6.27	7.05	7.85
Laundries	# of 10lb Machines/Month	5.02	13.25	13.25	14.64	16.45	18.32
Restaurants & Bars							
Inside Seating	# of Seats/Month	0.94	2.48	2.48	2.74	3.08	3.43
Outside Seating	# of Seats/Month	0.31	0.82	0.82	0.90	1.02	1.13
Theatres	# of Seats/Month	0.12	0.32	0.32	0.35	0.39	0.44
Churches	# of Seats/Month	0.21	0.55	0.55	0.61	0.69	0.77
Barber Shops	# of Service Chairs/Month	3.23	8.53	8.53	9.42	10.59	11.79
Beauty Shops	# of Service Chairs/Month	5.36	14.15	14.15	15.63	17.57	19.56
Schools	# of Seats/Month	0.02	0.05	0.05	0.06	0.07	0.07
Marina Boat Pumping Facility	Per Facility/Month	10.62	28.04	28.04	30.97	34.80	38.76
Swimming Pools	Per Pool/Month	2.44	6.44	6.44	7.12	8.00	8.91
Snack Bars	# of Fixture Units/Month	0.94	2.48	2.48	2.74	3.08	3.43
Motel Res/ Stock Coop/ Studio	Living Units/Month	8.12	21.44	21.44	23.68	26.61	29.64
Animal Shelter	Per Account/Month	33.61	88.74	88.74	98.03	110.15	122.66
Service Stations	# of Service Bays/Month	16.40	43.30	43.30	47.83	53.75	59.85

PROPOSED MONTHLY NON-RESIDENTIAL SYSTEM REPLACEMENT RATES (BY UNIT)**

UNIT	CURRENT RATES (BY ACCOUNT)	PROPOSED MONTHLY NON-RESIDENTIAL SYSTEM REPLACEMENT RATES (BY UNIT)**					
		FY 2019-20	FY 2020-21	FY 2021-22	FY 2022-23	FY 2023-24	
Proposed Effective Dates		1/1/20	7/1/20	7/1/21	7/1/22	7/1/23	
Motel w/o Kitchen	Per Living Unit/Month	\$8.15	\$2.14	\$4.79	\$4.90	\$5.00	\$5.11
Motel w/ Kitchen	Per Living Unit/Month	8.15	2.79	6.24	6.38	6.52	6.66
Campsite w/ Sewer	# of Sites/Month	8.15	4.28	9.57	9.78	9.99	10.20
Campsite w/o Sewer	# of Sites/Month	8.15	3.74	8.37	8.55	8.73	8.92
Other Business	# of Fixture Units/Month	8.15	0.85	1.90	1.95	1.99	2.03
Markets	# of Fixture Units/Month	8.15	1.50	3.36	3.43	3.50	3.58
Laundries	# of 10lb Machines/Month	8.15	3.51	7.84	8.01	8.18	8.36
Restaurants & Bars							
Inside Seating	# of Seats/Month	8.15	0.66	1.47	1.50	1.53	1.56
Outside Seating	# of Seats/Month	8.15	0.22	0.48	0.49	0.51	0.52
Theatres	# of Seats/Month	8.15	0.08	0.19	0.19	0.20	0.20
Churches	# of Seats/Month	8.15	0.15	0.33	0.33	0.34	0.35
Barber Shops	# of Service Chairs/Month	8.15	2.26	5.04	5.15	5.26	5.38
Beauty Shops	# of Service Chairs/Month	8.15	3.74	8.37	8.55	8.73	8.92
Schools	# of Seats/Month	8.15	0.01	0.03	0.03	0.03	0.03
Marina Boat Pumping Facility	Per Facility/Month	8.15	7.42	16.58	16.94	17.30	17.68
Swimming Pools	Per Pool/Month	8.15	1.70	3.81	3.89	3.98	4.06
Snack Bars	# of Fixture Units/Month	8.15	0.66	1.47	1.50	1.53	1.56
Motel Res/ Stock Coop/ Studio	Living Units/Month	8.15	5.67	12.68	12.95	13.23	13.51
Animal Shelter	Per Account/Month	8.15	23.48	52.47	53.60	54.76	55.94
Service Stations	# of Service Bays/Month	8.15	11.46	25.60	26.16	26.72	27.30

**Current System Replacement Rate is charged per account. Proposed System Replacement Rate will be charged per billing unit.

The District's Fiscal Year (FY) is July 1st through June 30th.



Current & Proposed Water Rates

Please contact the District or visit www.ntpud.org with questions or if you would like larger versions of the rate tables.

PROPOSED MONTHLY RATES

SINGLE FAMILY RESIDENTIAL		CURRENT RATES	PROPOSED MONTHLY RATES				
			FY 2019-20	FY 2020-21	FY 2021-22	FY 2022-23	FY 2023-24
Proposed Effective Dates			1/1/20	7/1/20	7/1/21	7/1/22	7/1/23
Fixed (\$/month)							
Base	\$42.02	\$32.68	\$33.50	\$34.17	\$34.85	\$35.55	
System Replacement	21.84	28.17	28.76	29.35	29.96	30.58	
State/Federal Mandate	1.44	1.48	1.53	1.57	1.62	1.67	
Current Variable (\$/1,000 gallons)							
0 - 6,000 gallons	\$0.00	-	-	-	-	-	
> 6,000 - 40,500 gallons	3.06	-	-	-	-	-	
> 40,500 gallons	5.24	-	-	-	-	-	
Proposed Variable (\$/1,000 gallons)							
0 - 8,000 gallons	-	\$2.65	\$2.72	\$2.77	\$2.83	\$2.89	
> 8,000 - 20,000 gallons	-	2.85	2.92	2.98	3.04	3.10	
> 20,000 gallons	-	3.11	3.19	3.25	3.32	3.39	

PROPOSED MONTHLY RATES

COMMERCIAL		CURRENT RATES	PROPOSED MONTHLY RATES				
			FY 2019-20	FY 2020-21	FY 2021-22	FY 2022-23	FY 2023-24
Proposed Effective Dates			1/1/20	7/1/20	7/1/21	7/1/22	7/1/23
Fixed (\$/month)							
Base							
¾"	\$37.88	\$48.22	\$49.42	\$50.41	\$51.42	\$52.45	
1"	66.31	84.41	86.52	88.25	90.02	91.82	
1 ½"	170.53	217.08	222.50	226.95	231.49	236.12	
2"	257.67	328.00	336.20	342.93	349.78	356.78	
3"	454.73	578.85	593.32	605.19	617.29	629.64	
4"	708.65	902.08	924.63	943.12	961.98	981.22	
6"	1,680.80	1,607.31	1,647.50	1,680.45	1,714.06	1,748.34	
System Replacement							
¾"	\$21.84	\$28.17	\$28.76	\$29.35	\$29.96	\$30.58	
1"	34.32	44.27	45.19	46.13	47.08	48.05	
1 ½"	88.25	113.83	116.20	118.61	121.06	123.57	
2"	133.35	172.00	175.58	179.22	182.93	186.71	
3"	235.32	303.53	309.84	316.27	322.82	329.49	
4"	366.73	473.03	482.86	492.88	503.09	513.49	
6"	873.60	939.01	958.53	978.42	998.69	1,019.36	
State/Federal Mandate	\$1.44	\$1.48	\$1.53	\$1.57	\$1.62	\$1.67	
Multiplier							
¾"	\$49.24	\$0.00	\$0.00	\$0.00	\$0.00	\$0.00	
1"	86.20	0.00	0.00	0.00	0.00	0.00	
1 ½"	221.69	0.00	0.00	0.00	0.00	0.00	
2"	334.97	0.00	0.00	0.00	0.00	0.00	
3"	591.15	0.00	0.00	0.00	0.00	0.00	
4"	921.25	0.00	0.00	0.00	0.00	0.00	
6"	0.00	0.00	0.00	0.00	0.00	0.00	
Variable (\$/1,000 gallons)		Tiers Vary By Meter Size					
Tier 1	\$0.00	\$2.63	\$2.69	\$2.74	\$2.79	\$2.85	
Tier 2	3.06	2.80	2.87	2.93	2.99	3.05	
Tier 3	5.24	2.94	3.01	3.07	3.13	3.19	

PROPOSED MONTHLY RATES

MULTI-RESIDENTIAL		CURRENT RATES	PROPOSED MONTHLY RATES				
			FY 2019-20	FY 2020-21	FY 2021-22	FY 2022-23	FY 2023-24
Proposed Effective Dates			1/1/20	7/1/20	7/1/21	7/1/22	7/1/23
Fixed (\$/month)							
Base							
¾"	\$37.88	\$63.49	\$65.08	\$66.38	\$67.71	\$69.06	
1"	66.31	111.15	113.93	116.20	118.53	120.90	
1 ½"	170.53	285.84	292.98	298.84	304.82	310.92	
2"	257.67	431.90	442.70	451.55	460.58	469.79	
3"	454.73	762.21	781.26	796.89	812.82	829.08	
4"	708.65	1,187.82	1,217.51	1,241.86	1,266.70	1,292.04	
6"	1,680.80	2,116.45	2,169.36	2,212.74	2,257.00	2,302.14	
System Replacement							
¾"	\$21.84	\$28.17	\$28.76	\$29.35	\$29.96	\$30.58	
1"	34.32	44.27	45.19	46.13	47.08	48.05	
1 ½"	88.25	113.83	116.20	118.61	121.06	123.57	
2"	133.35	172.00	175.58	179.22	182.93	186.71	
3"	235.32	303.53	309.84	316.27	322.82	329.49	
4"	366.73	473.03	482.86	492.88	503.09	513.49	
6"	873.60	939.01	958.53	978.42	998.69	1,019.36	
Dwelling Unit Fee	\$10.29	\$0.00	\$0.00	\$0.00	\$0.00	\$0.00	
State/Federal Mandate	\$1.44	\$1.48	\$1.53	\$1.57	\$1.62	\$1.67	
Variable (\$/1,000 gallons)		Tiers Vary By Meter Size					
Tier 1	\$0.00	\$2.62	\$2.68	\$2.73	\$2.78	\$2.84	
Tier 2	3.06	2.72	2.78	2.84	2.90	2.96	
Tier 3	5.24	2.97	3.05	3.11	3.17	3.23	

PROPOSED MONTHLY RATES

COMMON METER (Irrigation)		CURRENT RATES	PROPOSED MONTHLY RATES				
			FY 2019-20	FY 2020-21	FY 2021-22	FY 2022-23	FY 2023-24
Proposed Effective Dates			1/1/20	7/1/20	7/1/21	7/1/22	7/1/23
Fixed (\$/month)							
Base							
¾"	\$13.84	\$17.39	\$17.82	\$18.18	\$18.54	\$18.91	
1"	13.84	30.44	31.20	31.82	32.46	33.11	
1 ½"	13.84	78.28	80.24	81.84	83.48	85.15	
2"	13.84	118.28	121.24	123.66	126.14	128.66	
3"	13.84	208.74	213.96	218.24	222.60	227.05	
4"	13.84	325.30	333.43	340.10	346.90	353.84	
6"	13.84	579.61	594.10	605.99	618.11	630.47	
System Replacement							
¾"	\$0.00	\$28.17	\$29.42	\$30.01	\$30.61	\$31.22	
1"	0.00	50.24	51.50	52.53	53.58	54.65	
1 ½"	0.00	129.20	132.43	135.08	137.78	140.54	
2"	0.00	195.23	200.11	204.11	208.19	212.35	
3"	0.00	344.53	353.14	360.20	367.41	374.76	
4"	0.00	536.91	550.34	561.34	572.57	584.02	
6"	0.00	956.67	980.58	1,000.20	1,020.20	1,040.60	
State/Federal Mandate	\$0.00	\$1.48	\$1.53	\$1.57	\$1.62	\$1.67	
Variable (\$/1,000 gallons)							
0 - 41,000 gal	\$3.06	\$3.05	\$3.13	\$3.19	\$3.25	\$3.32	
41,000 gal and greater	5.24	3.40	3.48	3.55	3.62	3.69	

Current & Proposed Water Rates

Please contact the District or visit www.ntpud.org with questions or if you would like larger versions of the rate tables.

FIRE PROTECTION SYSTEM

(per Fire Line Size)

PROPOSED MONTHLY RATES

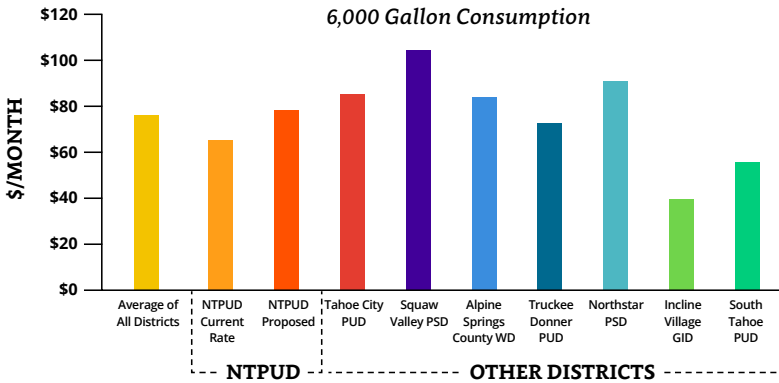
CURRENT RATES	FY 2019-20	FY 2020-21	FY 2021-22	FY 2022-23	FY 2023-24	
	1/1/20	7/1/20	7/1/21	7/1/22	7/1/23	
Proposed Effective Dates	1/1/20	7/1/20	7/1/21	7/1/22	7/1/23	
Fixed (\$/month)						
¾"	\$2.70	\$2.70	\$2.77	\$2.83	\$2.89	\$2.95
1"	3.60	3.60	3.69	3.76	3.84	3.92
1 ½"	5.40	5.40	5.54	5.65	5.76	5.87
2"	7.20	7.20	7.38	7.53	7.68	7.83
3"	10.80	10.80	11.07	11.29	11.52	11.75
4"	14.40	14.40	14.76	15.06	15.36	15.66
6"	21.60	21.60	22.14	22.58	23.03	23.50
8"	28.80	28.80	29.52	30.11	30.71	31.33

MULTI-RESIDENTIAL & COMMERCIAL CLASSES

METER SIZE	TIER 1	TIER 2	TIER 3
¾"	0 - 6,000 gal	6,000 - 41,000 gal	41,000 gal & greater
1"	0 - 11,000 gal	11,000 - 46,000gal	46,000 gal & greater
1 ½"	0 - 27,000 gal	27,000 - 116,000 gal	116,000 gal & greater
2"	0 - 41,000 gal	41,000 - 134,000 gal	134,000 gal & greater
3"	0 - 72,000 gal	72,000 - 161,000 gal	161,000 gal & greater
4"	0 - 112,000 gal	112,000 - 261,000 gal	261,000 gal & greater
6"	0 - 200,000 gal	200,000 - 460,000 gal	460,000 gal & greater

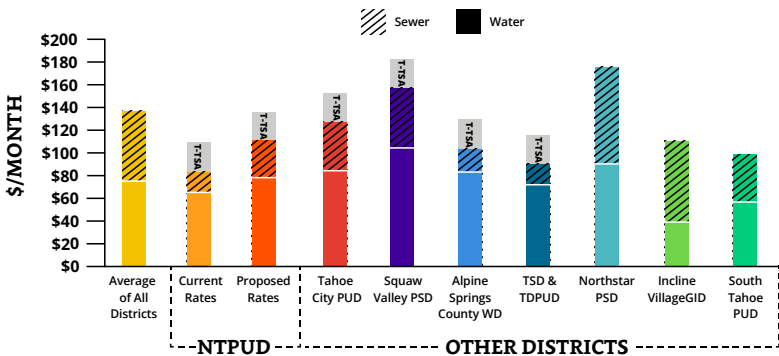
WATER UTILITY COMPARISON - YEAR 1

6,000 Gallon Consumption



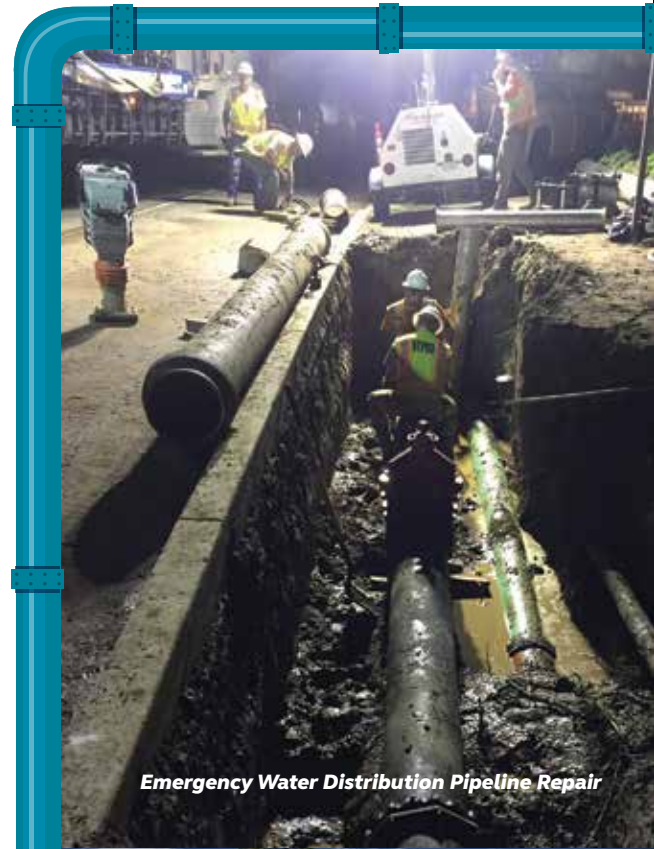
COMBINED MONTHLY WATER & SEWER BILL COMPARISON - YEAR 1

6,000 Gallons Consumption



Single Family Residential Customers Effective 1/1/20

T-TSA: Customer charges, under separate bill from Tahoe-Truckee Sanitation Agency, for wastewater treatment



Emergency Water Distribution Pipeline Repair



Zone 1 Water Storage Reservoir



Proposed Rate Increases

The proposed water and sewer rates for the next five years are shown in detail in the preceding charts.

The single-family residential monthly sewer bill will increase to \$32.96 as of January 1, 2020; to \$41.19 as of July 1, 2020; to \$44.17 as of July 1, 2021; to \$47.95 as of July 1, 2022; and to \$51.86 as of July 1, 2023.

The average single-family residential water bill (assuming 6,000 gallons of consumption per month) will increase to \$78.23 as of January 1, 2020; to \$80.10 as of July 1, 2020; to \$81.71 as of July 1, 2021; to \$83.41 as of July 1, 2022; and to \$85.14 as of July 1, 2023. The amount of the water bill is dependent on the actual amount of water used. Lower monthly water bills are possible via reduced monthly water consumption. Customers can calculate projected monthly water bills, based on the proposed rates, by using the Utility Rate Calculator on the District's website (www.ntpud.org).

Rate Hearing Process

The District's sewer and water rates fund operations, maintenance, and the construction of critical infrastructure. Proposition 218 requires the District to base its rates on the cost of providing sewer and water services (including current and future infrastructure replacement) and mandates that the District may not collect more revenue than is necessary to recover the costs of providing those services. **The Board of Directors of the North Tahoe Public Utility District will consider the proposed increases to its monthly sewer and water rates at a public hearing on November 12, 2019, at 5:00 p.m., at the North Tahoe Event Center – 8318 North Lake Boulevard, Kings Beach, CA 96143.** The Board of Directors welcomes community input and will consider public comments as well as any written protests at the hearing. All written protests must be received prior to the close of the hearing. The Board of Directors, after the close of the public hearing, will establish the sewer and water rates for the remainder of Fiscal Year 2019/20 and for Fiscal Years 2020/21, 2021/22, 2022/23, and 2023/24. Final rates may be less than, but may not exceed, the proposed increases set forth in this notice.

If You Would Like to File a Protest

Sewer and water rate adjustments are subject to Proposition 218. As required by law, the proposed rate adjustments will not take effect if a majority of District customers file a valid written protest. Only one protest per parcel can be accepted. If a property owner and his/her tenant directly responsible for paying the water and/or sewer bill file separate protests for the same parcel, only one protest will be counted.

To Complete a Valid Written Protest:

- Handwrite or type a letter that states: "I protest the sewer and/or water rate increase."
- Sign your protest and print your name. All letters must include the customer's or property owner's signature to be valid; an electronic signature cannot be counted.
- Include your utility account number and the service address or Assessor's Parcel Number (APN) for the account. Property owners who lease their property and do not pay for sewer and/or water service are only required to list the service address or APN.

Deliver the Written Protest to the District:

- Mail your letter: NTPUD Proposed Rate Increase, c/o NTPUD, P.O. Box 139, Tahoe Vista, CA 96148
- Hand deliver it to the NTPUD Administration Offices: 875 National Avenue, Tahoe Vista, CA 96148
- Hand deliver it to the District Clerk prior to the close of the public hearing.

All protests must be received by the North Tahoe Public Utility District before the close of the public hearing on November 12, 2019.



PROPOSED FIVE-YEAR RATE INCREASE CUSTOMER NOTIFICATION

Para recibir esta información en español, comuníquese con el Distrito.

*Get involved,
learn more!*

Utility Rate Open House

October 17, 2019; 6 - 8pm
North Tahoe Event Center
8318 North Lake Blvd
Kings Beach, CA 96143

Public Hearing

November 12, 2019; 5pm
North Tahoe Event Center
8318 North Lake Blvd
Kings Beach, CA 96143

If you would like additional information on the District, the proposed sewer and water rate increases, and the District's five-year Capital Improvement Plan, please visit ntpud.org or call (530) 546-4212.



@northtahoepud



@northtahoepud



@northtahoeparks

AN IMPORTANT NOTE

There are two private water companies, **Agate Bay Water Company** and **Fulton Water Company**, that operate within the service boundaries of the North Tahoe Public Utility District. Customers served by either of these companies will only be impacted by the proposed sewer rate increase, not the proposed water rate increase.

PRESORTED
FIRST-CLASS
U.S. POSTAGE PAID
PERMIT #1
KINGS BEACH, CA

PO Box 139
875 National Avenue
Tahoe Vista, CA 96148
Ph: (530) 546-4212
Fk: (530) 546-2652
ntpud@ntpud.org

