



Customer Procedures and General Information for Water Customers

- Helpful Hints for Customers
- Summary of Rules, Regulations & Procedures for Water Connection
- Summary of Specifications
- Example of Water Service Connection, Backflow Prevention Assemblies, Fire Service Requirements

Questions?

North Tahoe Public Utility District
875 National Avenue
PO Box 139
Tahoe Vista, CA 96148

Phone (530) 546-4212

Fax (530) 546-2652

Helpful Hints for Customers

- Before you Dig – Call USA North (Underground Service Alert) at 800-227-2600 at least two (2) business days before any type of excavation is to take place. This is a free service and could save you thousands of dollars in repair costs. Plus, **IT'S THE LAW.**
- Obtain Encroachment Permits and supply Certificate of Insurance if excavating is done in the State or County right-of-ways.
- Water installation and connection fees must be paid prior to scheduling water meter installation.
- Installation of water service line shall be in conformance with the Uniform Plumbing Code.
- A minimum of 72 hours notice for water meter installation is required by the NTPUD.
- Water meter installation must be completed prior to water lateral testing and inspection. Excavation must be completed, clear of debris, and ready for meter installation.
- A blade or gate valve must be installed on the discharge side of the water meter box (on the house-side of line) by the customer for their use.
- A valve shall be set within the residence line to maintain a pressure lower than 60 PSI.
- If your project includes a fire suppression system, irrigation system, boiler/hydronic heating system, or an auxiliary water source connection (fire pump nozzle or other water source), you may be required to install an approved backflow prevention device in order to protect the public water system from contamination.

SUMMARY OF RULES, REGULATIONS & PROCEDURES FOR WATER CONNECTION

- a) Application for water service shall be made at the District office. The appropriate connection fee, and cost of meter installation, which includes parts and labor, is shown on the Application for sewer and water connection. The cost of this installation may be greater depending on the work and time involved. If a tap on the District's main is needed, the owner shall excavate from the property line to the main. The District will perform the tap and install the water line from the main to the property line. The owner is responsible for backfilling the trench and performing any necessary paving. The cost for the tap will be billed to the owner on a time and materials basis. Connection fees for other than a single-family residence shall be in accordance with District Ordinances. No service will be given, work inspected, or approved until the connection fee has been paid.
- b) Meter installation will be scheduled upon notice to the District and shall be completed prior to inspection of the line. Inspections may be scheduled between 8:30 AM and 4:00 PM, Monday through Friday upon 48 hours notice. No inspections will be scheduled on weekends. Work, which requires inspection and is not complete at 4:30 PM, shall be inspected and all costs incurred by the District for overtime inspection shall be billed to the Owner.
- c) Water and Sewer service inspections should be scheduled simultaneously.
- d) The work to be inspected by the District shall be from the main to five feet outside of the house foundation.

SUMMARY OF SPECIFICATIONS

- a) Pipe size shall be a minimum of ¾".
- b) Pipe materials shall be capable of withstanding the existing water pressure, including an allowance for surge. Approved types of pipes for installation within the District are:
 - ◆ Schedule 40 galvanized steel pipe
 - ◆ Polyethylene tubing, heavy density #3408
 - ◆ 200 psi rating minimum, or Type K copper soft annealed tubing

All pipes used must be approved by AWWA and/or NSF for use in water systems and be appropriately marked.

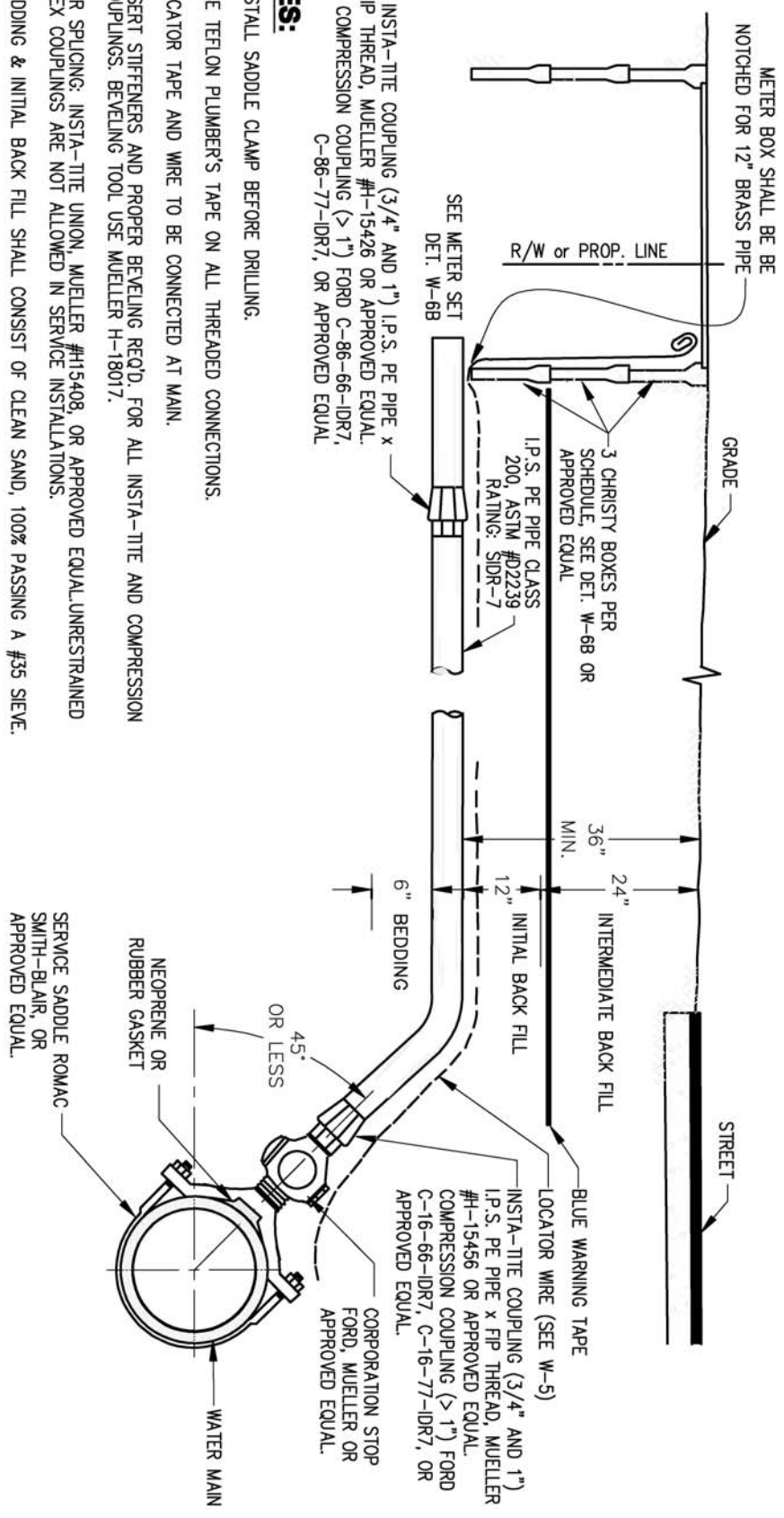
- c) The District will provide and install the water meter and box at the owner's expense. If a tap on the District Main is required, it will be billed on a time and material basis. It is the responsibility of the owner to install a wheel handled gate valve to act as the customer's shut off valve, and to connect the service lines from the meter to the structure.

- d) The water meter box location must remain accessible to the District and shall not be paved over or covered in any way.
- e) The installation of the water service line shall be in conformance with the Uniform Plumbing Code.
- f) The line shall be bedded on a firm trench bottom of fine granular material passing the 3/4" sieve. Bedding and backfill should have a minimum thickness of 4" and 6", respectively.
- g) The line shall be left exposed and shall be leak proof under static line pressure when witnessed and inspected by the District.
- h) The minimum depth of the water service is 30".
- i) Sewer and water lines may be placed in the same trench only when both of the following requirements are met:
 - ◆ The bottom of the water pipe, at all points, shall be at least 12" above the top of the sewer line.
 - ◆ The water pipe shall be placed on a solid shelf excavated at one side of the common trench, and 12" horizontally from the sewer line.
- j) When the static line pressure is over 60 psi (pounds per square inch), a suitable pressure-reducing valve shall be installed and maintained by the customer. This valve shall be set to maintain a pressure lower than 60 psi (pounds per square inch) within the house.
- k) All plumbing fixtures used in the structures shall meet the following low flow requirements:
 - ◆ Toilets 3.5 gallons per flush
 - ◆ Showers 3.5 gallons per minute
 - ◆ Faucets 4 gallons per minute

The above figures are with a water pressure not to exceed 60 psi.

- l) Billing will commence and monthly water service charge will be prorated from the day the meter is installed.

1. INSTALL SADDLE CLAMP BEFORE DRILLING.
2. USE TEFLON PLUMBER'S TAPE ON ALL THREADED CONNECTIONS.
3. LOCATOR TAPE AND WIRE TO BE CONNECTED AT MAN.
4. INSERT STIFFENERS AND PROPER BEVELING REQ'D. FOR ALL INSTA-TITE AND COMPRESSION COUPLINGS. BEVELING TOOL USE MUELLER H-18017.
5. FOR SPLICING: INSTA-TITE UNION, MUELLER #H15408, OR APPROVED EQUAL. UNRESTRAINED FLEX COUPLINGS ARE NOT ALLOWED IN SERVICE INSTALLATIONS.
6. BEDDING & INITIAL BACK FILL SHALL CONSIST OF CLEAN SAND, 100% PASSING A #35 SIEVE.
7. SET METER BOX 1/2" BELOW GRADE.
8. INTERMEDIATE BACK FILL MAY BE NATIVE EARTH, IF SUITABLE FOR COMPACTION, 100% LESS THAN 3" IN DIAMETER IN SIZE.
9. USE CAST IRON METER BOX LID LABELED "WATER" (STEEL LID IS REQUIRED IN ALL AREAS). SEE STD. SPEC. DETAIL W6-B.
10. 3" SQUARE APRON, (2" THICK ASPHALT OR 4" THICK CONCRETE) SHALL BE INSTALLED AROUND WATER METER BOX IN UNPAVED PARKING AREAS.
11. COMBINATION CORPORATION STOP & COMPRESSION FITTINGS ARE NOT ALLOWED.



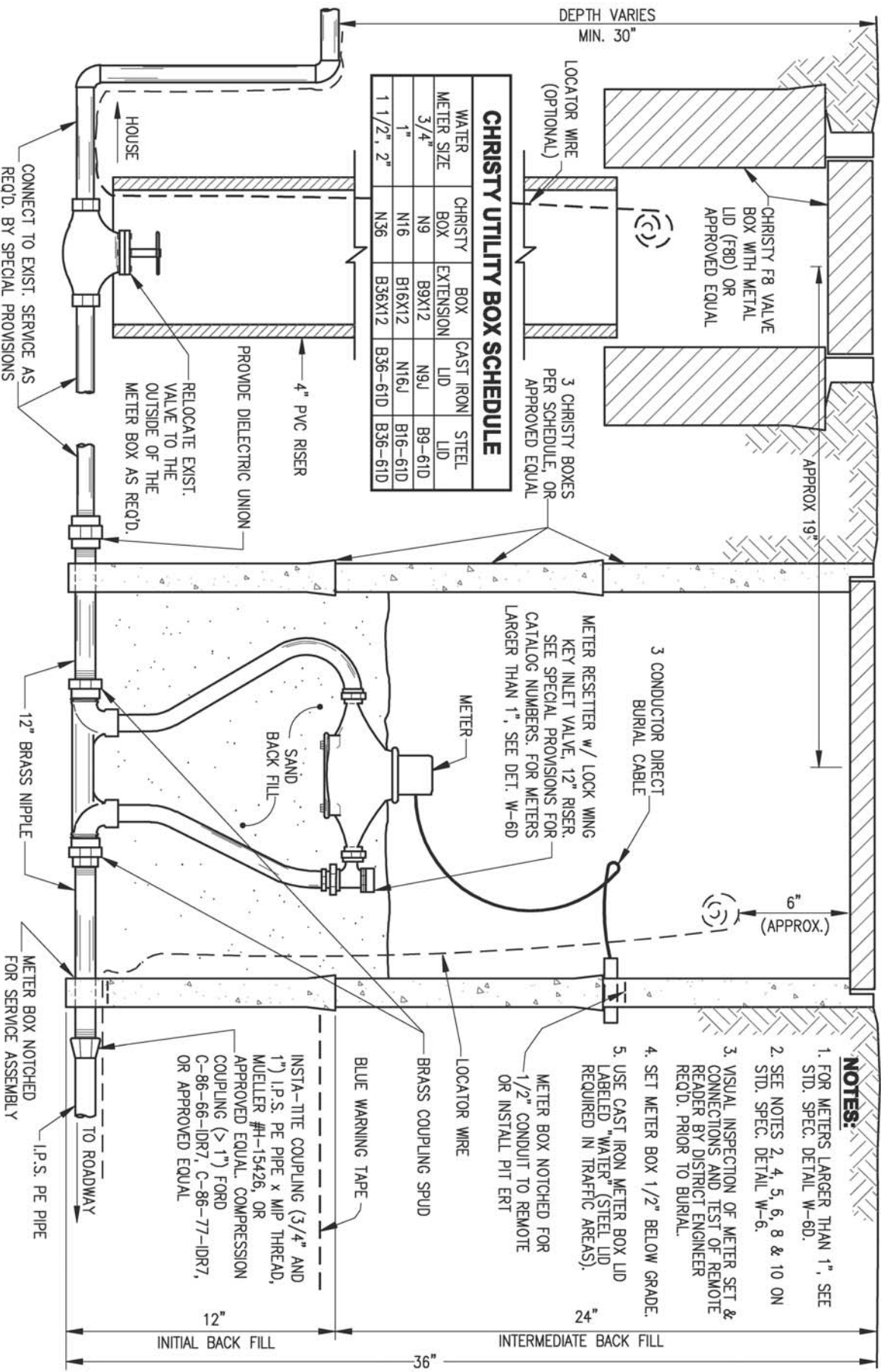
NOTES:

NORTH TAHOE PUBLIC UTILITY DISTRICT

**STANDARD SPECIFICATION
WATER SERVICE CONNECTION**

REVISIONS				DRAWN BY: LAR	
DATE	BY	APP'D	DATE	BY	APP'D
10/04	CJH	LCS			
01/07	DTB	CRT			
03/08	TMG	TMG			

DATE: 03/00
APPROVED BY: LCS
SCALE: N.T.S.
SHEET: W-06



NORTH TAHOE PUBLIC UTILITY DISTRICT
STANDARD SPECIFICATION
METER SETTER DETAIL

REVISIONS				DRAWN BY: LAR	
DATE	BY	APP'D	DATE	BY	APP'D
6/01		LCS			
09/04	CJH	LCS			
10/04	CJH	LCS			
03/07	DTB	ORT			
03/08	DTB	TMG			

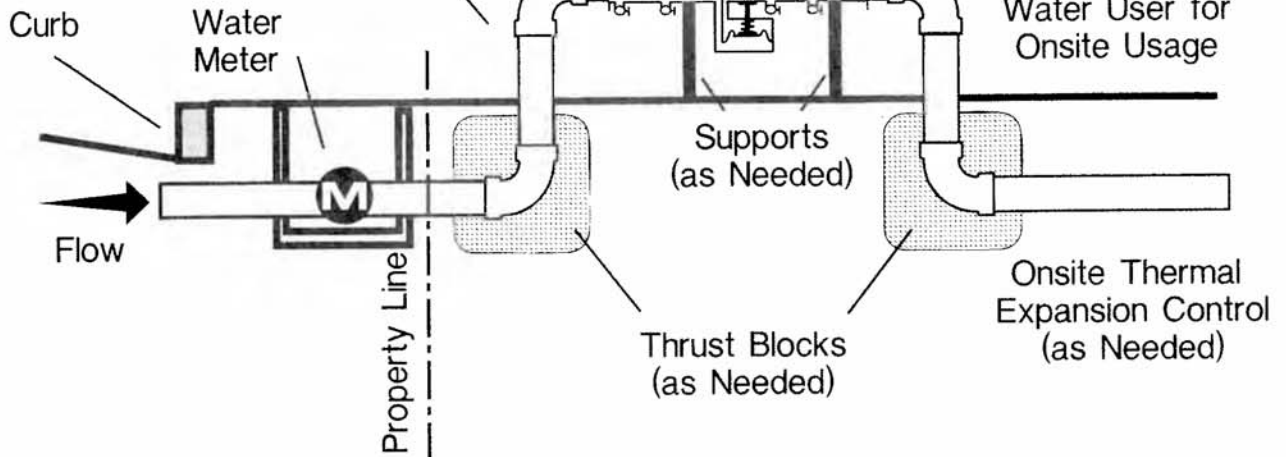
DATE: 03/00
 APPROVED BY: LCS
 SCALE: N.T.S.
 SHEET: W-06b

Service Connection Installation Guidelines

Assembly Shall Be Located as Close to the Service Connection as Possible With No Connections between the Water Meter and the Backflow Prevention Assembly

Assembly Shall be Horizontal and Level Unless Approved for Other Orientation(s)

All Piping Should be Hydraulically Calculated by Water User for Onsite Usage



Backflow Prevention Assemblies are to be used within their rated operating conditions:

Pressure:

Backflow prevention assemblies typically have maximum working water pressures (MWWP) of 150 psi (1034 KPa) or 175 psi (1206 KPa). Assemblies are designed to operate continuously at this pressure, which is identified on the assembly.

Temperature:

Backflow prevention assemblies are designed to operate continuously at their maximum working water temperature (MWWT), which is identified on the assembly.

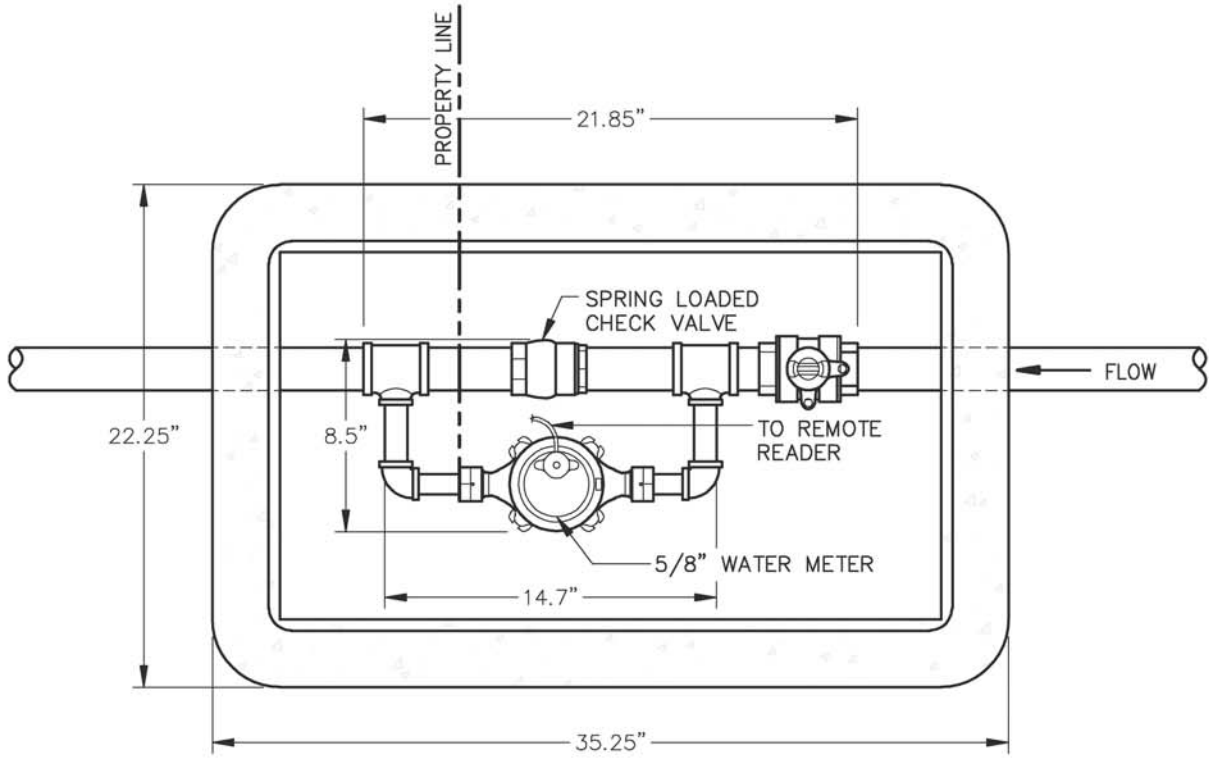
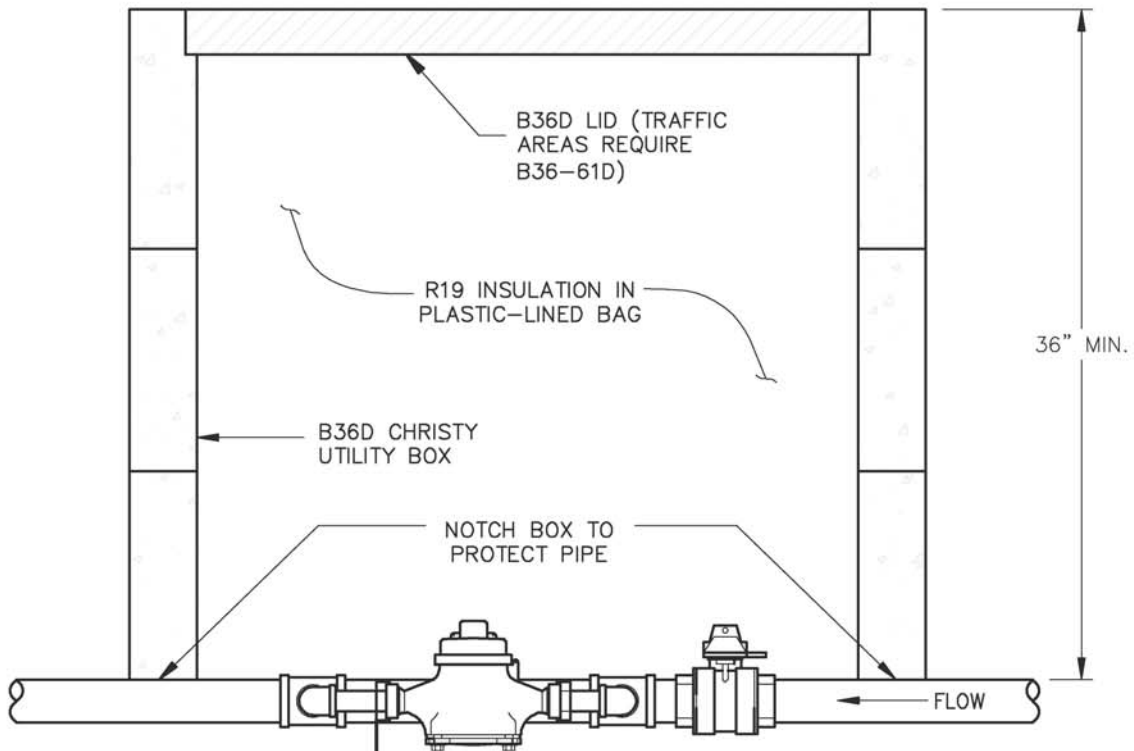
Rate of Flow:

Backflow prevention assemblies are designed to operate continuously up to their rated flow (i.e., gallons per minute - GPM; or liters per second - L/s) per Table 10-1.

NOTE: All installations of backflow prevention assemblies must be in compliance with state and local plumbing and building codes. Contact local administrative authority for detailed requirements.

Fig. 8.4

Service Connection Installation Guidelines

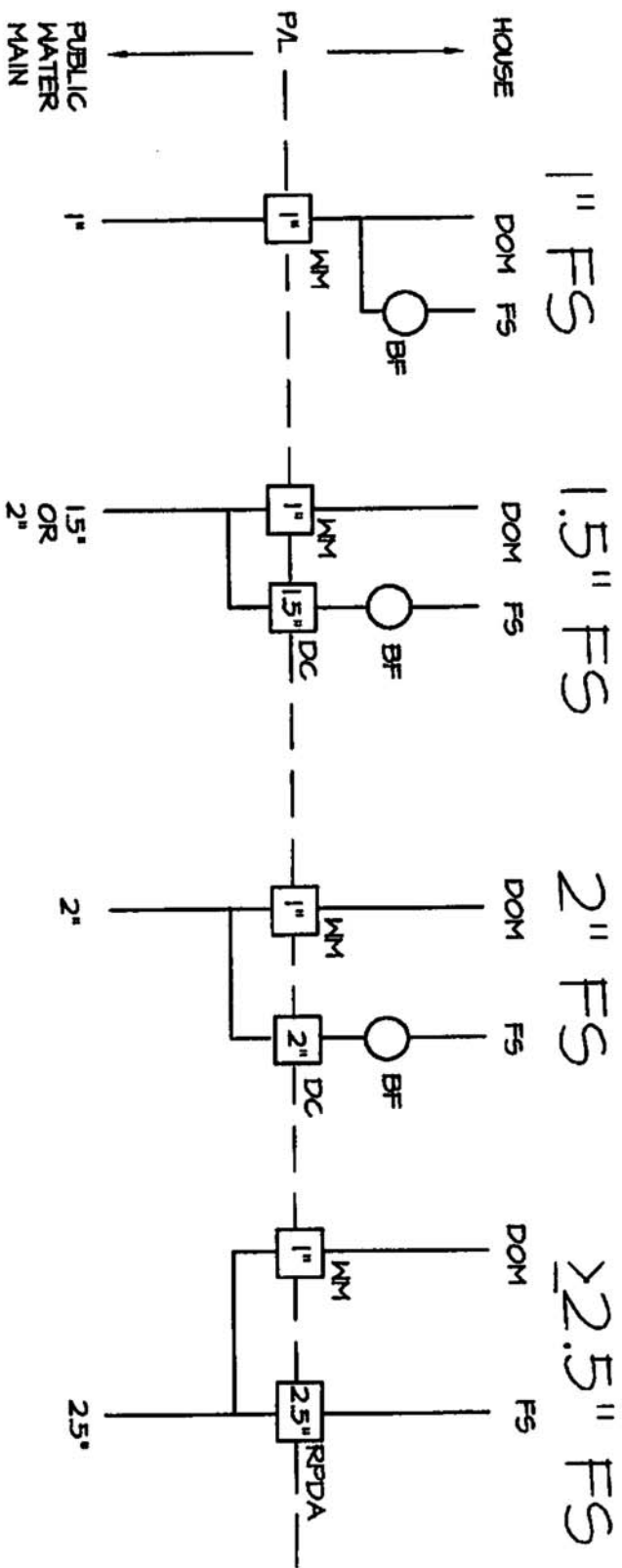


NORTH TAHOE PUBLIC UTILITY DISTRICT
STANDARD SPECIFICATION
FIRE SERVICE DETECTOR CHECK

REVISIONS		
DATE	BY	APP'D

DRAWN BY: MLB
 DATE: APRIL 1997
 APPROVED BY: LCS
 SCALE: N.T.S.
 SHEET: W-17

NTPUD FIRE SERVICE REQUIREMENTS



LEGEND

- DOM = DOMESTIC WATER
- FS = FIRE SERVICE
- WM = WATER METER
- BF = BACKFLOW ASSEMBLY. MUST BE AIRGAP, REDUCED PRESSURE OR RPDA
- DC = DETECTOR CHECK
- RPDA = REDUCED PRESSURE DETECTOR ASSEMBLY
- PL = PROPERTY LINE